



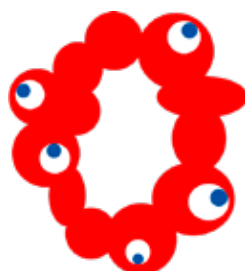
# SAFETY HEALTH WELL-BEING

@Work, @Home, & @Life.

Latest provisional version as of  
Nov. 07, 2024. Comments welcomed.

## Global Initiative for Safety, Health and Well-being @EXPO2025 & Beyond (GISHW)

*Become a GISHW Partner and help create a better  
tomorrow for global citizens, starting with the work-  
ing environment!*



OSAKA, KANSAI, JAPAN  
**EXPO**  
2025

Date: July 16 - 19, 2025  
Venues: Expo Hall, Expo Site,  
Expo Messe, Intex Osaka

A program of

**EXPO2025**  
(April 13 to October 13, 2025)



Visit us at [GISHW.com](https://www.gishw.com)

Human society is built on the contributions of individuals, each fulfilling their roles through work. To create a better world, we must seriously consider the safety, health, and well-being of workers. When a worker is injured, falls ill, or loses their life on the job, the impact is far-reaching. It affects not only the individual but also their family, friends, colleagues, supervisors, employers, business partners, and even the broader industry and community. Conversely, improvements in worker safety, health, and well-being bring positive ripple effects across these same groups.

Occupational Safety and Health (OSH) professionals contribute to global well-being by improving safety, health, and well-being in working environments (OSHW). At the 2025 Osaka-Kansai Expo, for the first time in Expo history, an event dedicated to the "safety, health, and well-being of workers" will take place. This event will introduce OSHW insights to a diverse range of organizations and individuals, raise awareness about OSHW, and strive to enhance the safety, health, and well-being of people worldwide!



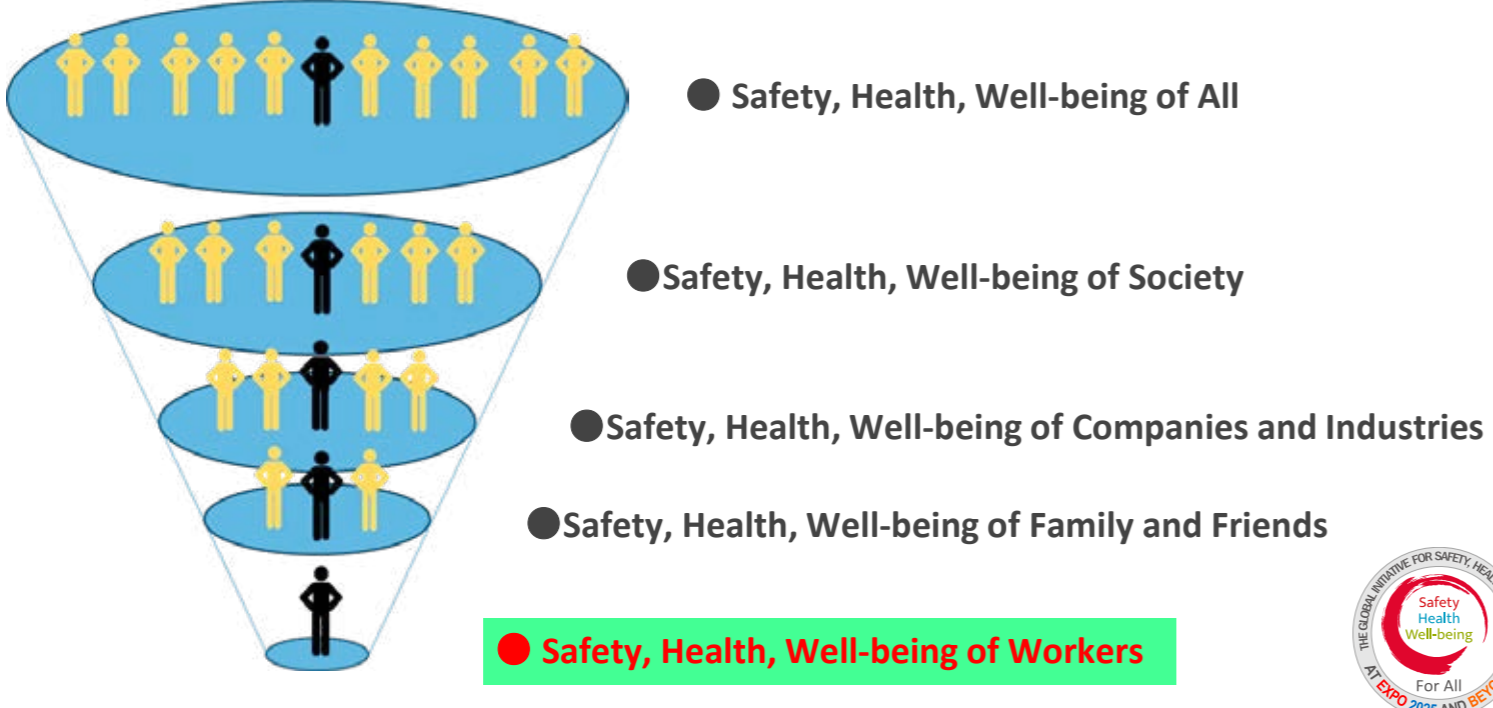
Concept  
**- People's Living Lab -**  
 A laboratory for a future society



Theme  
**Designing Future Society  
 for Our Lives**



Safety, Health, and Well-being for ALL, by leaving no single worker behind



**Don't turn a blind eye: Every day lives are lost at work**

WHO (World Health Organization) estimates that 2.1% of all deaths and 2.7% of the disease worldwide can be attributed to occupational risks. Thus, actions towards healthier and safer workplaces will contribute to improve and protect the lives of millions around the world.



According to estimates by the International Labour Organization (ILO), out of the approximately 3.5 billion people in the global workforce, 2.93 million die each year due to work-related causes, with about 90% of those deaths attributed to occupational diseases. In addition, around 400 million workers suffer from work-related injuries annually. The GDP lost due to preventable accidents amounts to nearly 4% globally each year. More than 60% of deaths due to work-related accidents occur in agriculture, forestry, fishing, construction, and manufacturing. Furthermore, workers under the age of 25 face a higher risk of workplace accidents compared to older workers.



**Prevention is not a cost, but an investment. It pays off.**

According to the research project by the International Social Security Association (ISSA), the German Social Accident Insurance (DGUV) and the German Social Accident Insurance Institution for the energy, textile, electrical and media products sectors (BG ETEM) spending on occupational safety and health is an investment that "pays off".

The Return on Prevention (ROP) is assessed to be 2.2.



**SAFETY HEALTH WELL-BEING**



**Well-being: The key to a sustainable future for everyone**

CONSTITUTION OF THE WORLD HEALTH ORGANIZATION  
 "Health is a state of complete physical, mental and social well-being and not merely the absence of disease or infirmity."



Workers well-being is a key factor in determining an organization's long-term effectiveness. Many studies show a direct link between productivity levels and the general health and well-being of the workforce.

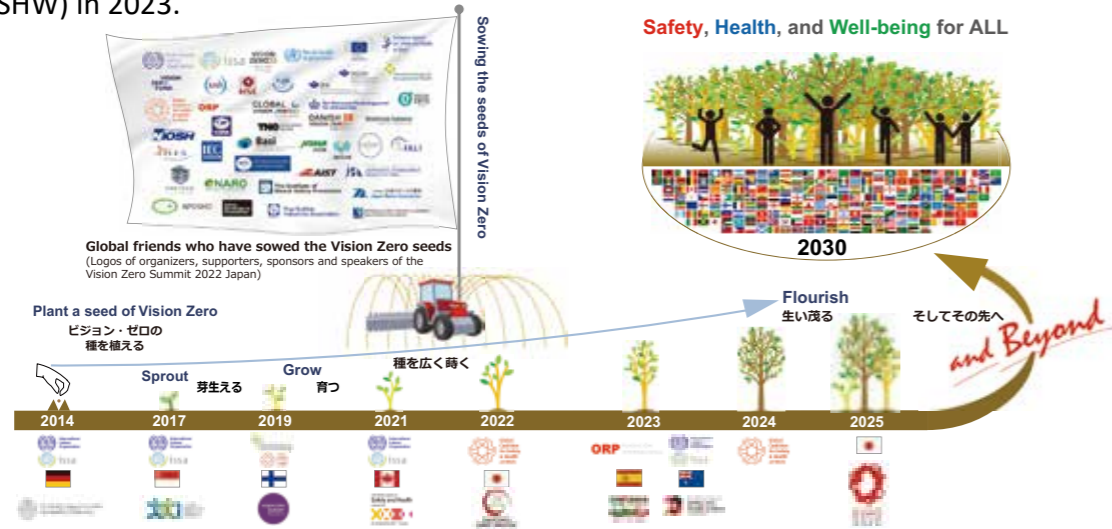


# The Journey for Safety, Health and Well-being at Work

"Workers should not become unhappy due to their work" is a shared belief across the world. Efforts to protect the safety, health, and well-being of workers have been made in many countries and regions. In Japan, the Japan Industrial Safety and Health Association (JISHA) launched the Zero-Accident Campaign in 1973. This campaign aims to create a bright and cheerful climate in the workplace based on the philosophy of respecting all human life as irreplaceable. From the perspective of the workers and with respect for each and every human life, the campaign insists on zero tolerance of industrial accidents, with the ultimate goal of zero disasters and zero diseases. The campaign aims to take steps on preemptive action for safety and health issues and to solve dangers and problems in the workplace with the participation of all workers.

Meanwhile, the concept of "zero" began spreading in Europe in the 1990s. In 2014, at the 20th World Congress on Safety and Health at Work in Germany, the Vision Zero approach was introduced, aiming to eliminate workplace accidents and occupational diseases. Since then, organizations, companies, and institutions worldwide have adopted this philosophy and incorporated it into their daily practices, achieving notable results.

Furthermore, at the 2nd Vision Zero Summit Japan (VZSJ2022) held in 2022, the "The Tokyo Declaration on Vision Zero For All" was announced. This declaration brought together institutions and companies participating in VZSJ2022, leading to the establishment of The Global Initiative for Safety, Health, and Well-being @EXPO2025 and BEYOND (GISHW) in 2023.



The theme of the Osaka-Kansai Expo 2025 (EXPO2025) is "Designing Future Societies for Our Lives." For the first time in Expo history, GISHW will host an event focused on the safety, health, and well-being of workers. Our goal is to enhance the safety, health, and well-being of all people through improvements in working environments.

GISHW will hold the global event dedicated to safety, health, and well-being at work from July 16 to 19 during the Osaka-Kansai Expo 2025. Experts from around the world will gather to discuss improving working conditions and designing a better future society.

The event will feature a High-Level Summit, a World Congress for Safety, Health, and Well-being Professionals, an ILO Youth Congress, an International Symposium, a Festival, and an Exhibition. These activities will provide a platform for discussions on building sustainable, safe, and healthy working environments. Let's work together to improve working environments and strive toward a better future for all workers.



## GISHW Meetings in Europe

A series of meetings were held from June 10 to 18, 2024, in Germany (Düsseldorf), Finland (Helsinki), and Switzerland (Geneva), to discuss collaboration for GISHW DAYS at EXPO 2025.



# MoU Signing Ceremonies

Memorandums of Understanding (MoUs) have been exchanged with various organizations in Switzerland (Geneva), Germany (Düsseldorf), Finland (Helsinki), and Korea (Seoul & Ulsan).

## Geneva, Switzerland



## Düsseldorf, Germany



## Helsinki, Finland



## Seoul, Korea



## Online MoU Exchange

Participants and logos shown:

- iOSH
- instpca
- OSHC
- L'ORÉAL
- OSHAfrica
- IOHA
- IALI
- safemap

More in progress!



# VISION ZERO SUMMIT 2022

11 to 13 May 2022

Redefining safety, health and well-being for the new normal



## OPENING STATEMENT AND KEYNOTES

**MASAO MUKAIDONO**  
INSTITUTE OF GLOBAL SAFETY PROMOTION (IGSAP) CHAIRMAN  
VZSJ JAPAN ORGANIZING COMMITTEE CHAIRMAN

**SHIGEYUKI GOTO**  
MINISTRY OF HEALTH, LABOUR AND WELFARE, JAPAN, MINISTER (2021-2022)

**TEDROS ADHANOM GHEBREYESUS**  
WORLD HEALTH ORGANIZATION (WHO) DIRECTOR GENERAL

**JOACHIM BREUER**  
INTERNATIONAL SOCIAL SECURITY ASSOCIATION (ISSA) PRESIDENT (2016-2022)

**STEFAN OLSSON**  
EUROPEAN COMMISSION (EC) WORKING CONDITION AND SOCIAL DIALOGUE DIRECTOR

**VANESSA HARWOOD-WHITCHER**  
INSTITUTION OF OCCUPATIONAL SAFETY AND HEALTH (IOSH) CHIEF EXECUTIVE

**KAZUHIKO ISHIMURA**  
NATIONAL INSTITUTE OF ADVANCED INDUSTRIAL SCIENCE AND TECHNOLOGY (AIST) PRESIDENT, CEO

**MANFRED SCHOCH**  
BMW CHAIRMAN OF BMW GROUP WORKS COUNCIL

**KAZUYUKI INOUE**  
SHIMIZU CORPORATION PRESIDENT AND DIRECTOR

**Tommi Alanko**  
FINNISH INSTITUTE OF OCCUPATIONAL HEALTH (FIOH) DIRECTOR OF OCCUPATIONAL SAFETY UNIT

The affiliations and positions are as of the time of Vision Zero Summit Japan 2022)

## Vision Zero for All was issued as the Tokyo Declaration

**Declares that Vision Zero**

1. Is a strategy and holistic mindset for prevention, which is built on the common desire to promote and establish a global prevention culture, and aims at reducing accidents and occupational diseases, and at promoting safety, health and well-being at work;
4. Contributes to the 2030 Sustainable Development Goals, in particular SDG 8 (Decent Work and Economic Growth), SDG 3 (Good Health and Wellbeing), SDG 4 (Quality Education) and SDG 17 (Partnerships for the Goals);

## EXPO2025 OSAKA, KANSAI, JAPAN PRESENTATION

World Expo 2025 will be held in Osaka, Kansai, Japan!



## Kick-off Meeting @ORP Congress 2023 (Bilbao, Spain) April 26-28, 2023



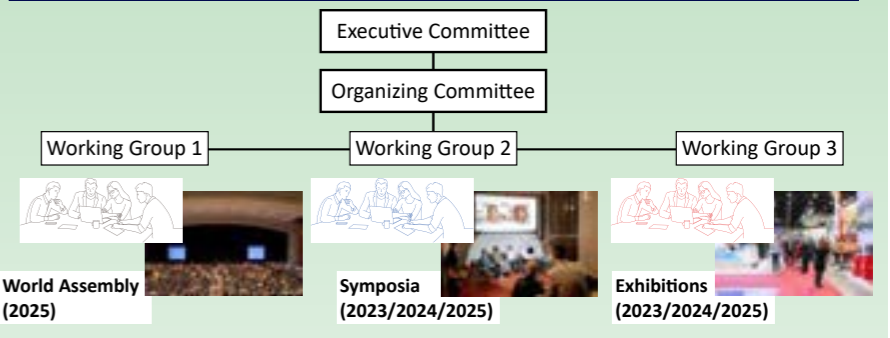
Concurrent with ORP Congress 2023, the kick-off meeting of the Global Initiative for Safety, Health and Well-being @ EXPO2025 and BEYOND was held, and prominent occupational safety and health leaders from international organizations pledged their support to the ambitious initiative.



## 1st General Meeting (Osaka, Japan) May 10, 2023



### Organization chart of the Global Initiative for Safety, Health, and Well-being @EXPO2025 and BEYOND



The first GISHW meeting in Osaka, Japan discussed plans for EXPO2025. It launched 3 Working groups to prepare detailed proposals for the 1st Executive Meeting during the World Congress on Safety and Health at Work in Sydney, Australia, in November 2023. The EXPO Association outlined the event's significance and thematic focus areas. The GISHW team communicated their objectives, aligning with the EXPO's goals, particularly Vision Zero. Attendees proudly wore blousons with "Vision Zero Journey," symbolizing their dedication to realizing Vision Zero for ALL by 2025 and beyond, in sync with the EXPO's schedule.



The Journey

GISHW Update

VZSJ2022

Kick-off @Bilbao

1st Gen. Meeting (Osaka)

1st Executive Meeting (Sydney)





During the GISHW Executive Committee Meeting held at the 23rd World Congress on Safety and Health at Work in Sydney, members reaffirmed their commitment to the safety, health, and well-being of workers worldwide. They renewed their determination to use EXPO 2025 as a platform to advocate for the importance of workers' well-being and to bring about positive changes in the global working environment.



The Journey for SHW @Work

GISHW Update

VZS12022

Kick-off @Bilbao

1st Gen. Meeting (Osaka)

1st Executive Meeting (Sydney)

### Executive Committee Members

More members to join!

In alphabetical order of last name

 Honorary Chair Masao Mukaidono	 Chair Toshihiro Fujita	 Vice-chair Eiyu Hayashi	 Vice-chair Hans-Horst Konkolewsky	 Vice-chair Marijana Zivkovic Megha	 Vice-chair Shinichi Takasaki	 Vice-chair Yoshikazu Tanaka	 Vice-chair Lars Wismer	 Vice-chair Noriko Takeuchi				
 Tommi Alanko	 Majed Alfuwaiq	 Jong-ju Ahn	 Dee Arp	 Hiroshi Asahi	 Mohammed Azman	 Ulrike Bollman	 Samantha Connell	 Bernie Doyle	 Rolf Ellegast	 Mireya R. Fabregat	 Christian Felten	 Hiroshi Fujiwara
 Andresa Hernandez	 Ho Siong Hin	 Carina Hjemgaard Hjorth	 Stuart Hughes	 Stefan Hussy	 Ehi Iden	 Ivan Ivanov	 Yasufumi Kaneda	 Seong Kyu Kang	 Hiroshi Kasai	 Takashi Kawata	 Akira Kubota	
 Zhao Li	 Tsuyoshi Matsushita	 Yasutomu Nasu	 Joaquim P. Nunes	 Akiko Ohara	 Stefan Olsson	 Manfred Schoch	 Malcolm Staves	 Alan Stevens	 Tamio Tanikawa	 Lars Tornvig	 Bonnie Yau	

### Organizing Committee Members

More members to join!

In alphabetical order of last name

 Chair Toshihiro Fujita	 Jong-ju Ahn	 Koji Akamatsu	 Masahiko Ariyama	 Thomas Börner	 William Cockburn	 Philippe Delbecq	 Bernie Doyle	 Ockert Dupper	 Mireya R. Fabregat	 Christian Felten
 Koichi Fukase	 Diana Gagliardi	 Jillian Hamilton	 Eiyu Hayashi	 Andresa Hernandez	 Satoshi Inoue	 Ivan Ivanov	 Jens Jühling	 Toshiyuki Kajiya	 Hiroshi Kasai	 Takashi Kawata
 Hans-Horst Konkolewsky	 Masahiro Hashiki	 Akira Kubota	 Jun Kurihara	 Keisuke Mikawa	 Tomohiro Mori	 Marijana Z. Megha	 Tomoe Murakami	 Tatsunobu Nakai	 Pablo Nieto	 Koichi Noda
 Akiko Ohara	 Marcel Le Roux	 Koji Sagawa	 Yuri Sakamoto	 Udo Schöpf	 Kazutsugu Suita	 Yoshikazu Tanaka	 Tamio Tanikawa	 Pernille Thau	 Sven Timm	 Lars Tornvig
 Bernd Treichel	 Takehiro Uehara	 Yuka Ujita	 Nathan Winter	 Lars Wismer	 Selçuk Yaşar	 Hideki Yamada	 Mariko Yamada	 Bonnie Yau	 Winson Yeung	 Marc Wittlich





GISHW @EXPO2025

Holistic Approach

High-level Summit

Int'l Symposium

World Assembly

ILO Youth Congress

Exhibition

Festival

SHW Days Overview

Expo 2025 Osaka Kansai's "People's Living Lab" envisions a global space where 8 billion people on the planet collaborate, combining knowledge and technology to address humanity's challenges. In line with this vision, GISHW aims to create a platform for OSHW (Occupational Safety, Health, and Well-being) experts to share insights, experiences, and ideas.

This platform will not only serve as a space for collaboration among experts but will also facilitate interactions and mutual learning between OSHW specialists, experts from other fields, various institutions, organizations, companies, and the general public.



EXPO2025 WEBSITE

The Expo in Japan, a leader in technological innovation, offers a prime opportunity to showcase how AI and robotics can improve OSHW at work. It also allows those involved in international standards and consensus-building to deepen their understanding of global OSHW trends and promote its significance further.

For business leaders, it will also be an opportunity to learn the importance of OSHW and incorporate it into their management practices. GISHW is confident that this represents true co-creation.

### Message from Japan



MASAO MUKAIDONO

Honorary Chairperson of GISHW Executive Committee  
Chair of the Institute of Global Safety Promotion



TOSHIHIRO FUJITA

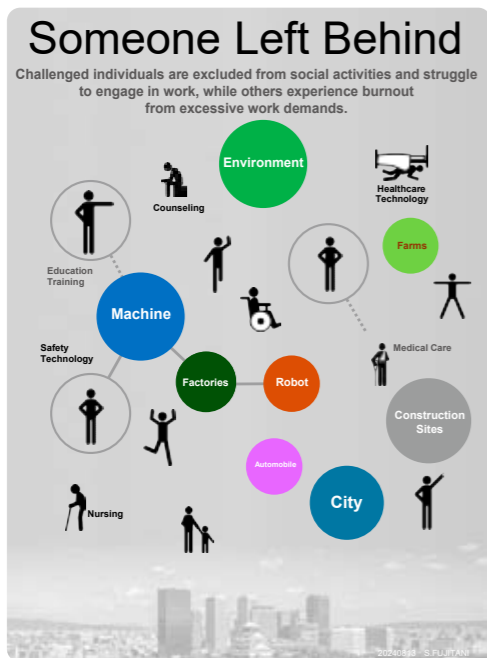
Chairperson of GISHW Executive Committee  
Director of the Institute of Global Safety Promotion



# The "People's Living Lab" aims for "Desining Future Society for Our Lives" in the working environment.

## Technologies for Safety, Health, and Well-being

To create a society where no one is left behind—



## People: Human Resources for a Sustainable Future

An inclusive society where everyone can contribute and thrive



We must establish safe and healthy work environments globally, fostering inclusive societies where diverse individuals can thrive. Safety and health at work should not rely solely on individual responsibility. Leadership must take an active role, positioning employee well-being as a core element of business strategy. It is important for leaders worldwide to drive the creation of safe and healthy work environments, enhancing employee well-being. These efforts will also ultimately contribute to organizational growth.

Work style Transformation

Diversity and Inclusion



Humankind has developed technologies to improve quality of life and create efficient, safe work environments. However, while increasing efficiency, technological advancements also introduce new risks. For instance, machinery and ICT enable new tasks but bring new dangers, driving the need for safety technologies. It's essential to harmonize technology and humans by utilizing AI and robotics to build safer, healthier working environments. Moreover, developing technologies that ensure a truly inclusive society, where no one is left behind, is crucial for achieving genuine well-being.

## Creating International Rules and Platform for Safety, Health and Well-being

Achieving safe and healthy working environments worldwide requires collaboration among all stakeholders. As the world confronts global challenges like climate change, major international organizations such as the ILO, WHO, and ISSA are leading initiatives to ensure we can work in environments that prioritize safety, health, and well-being.

Active participation in international standard-setting bodies like ISO and IEC is essential for shaping global social consensus. Collaboration between companies and institutions in establishing safe and healthy environments based on shared rules is key to a sustainable future. Protecting workers' safety and health is vital. These efforts contribute to the well-being and sustainability of society.

### International Cooperation

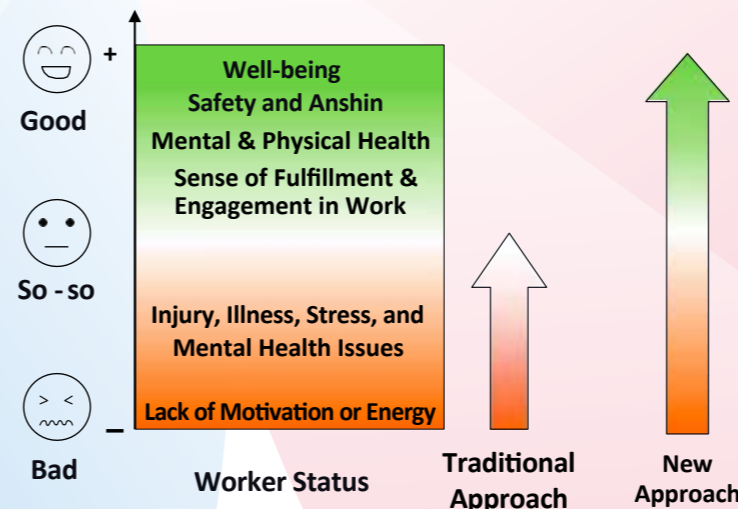


### Sustainability

### International Standards



## Safety Culture – Leadership, Management and Proactive Approach



Traditionally, the primary goal of workplace safety and health initiatives was to prevent injuries, illnesses, and physical or mental issues caused by work. More recently, the focus has expanded to creating environments where employees not only work safely and healthily but also find purpose and fulfillment in their jobs.

To drive this evolution, it is essential for management and leaders to understand the importance of safety, health, and well-being and to foster this culture within their organizations. Additionally, adopting new approaches, such as digital technologies like collaborative safety, is crucial to creating working environments where employees feel secure and can find meaning and satisfaction in their work.



# HIGH-LEVEL SUMMIT

JULY 17, 2025 (MORNING)



## Expo Hall

(TBD)

### Opening ceremony

Leaders from globally renowned organizations are convening for a momentous gathering.



International leaders

### International Leader Roundtable

Senior representatives from the leading international OSH-organizations and from the Government of Japan present their latest strategies for improving safety, health and well-being in a dramatically changing world of work, and discuss how they in this challenging context will promote the fundamental principle and rights to a safe and healthy work environment for all.



### Business Leader Roundtable

CEO's and Board members of renowned international and Japanese corporations discuss why the safety, health and well-being of their employees has become critical to achieving sustainable business success and why top-management commitment is essential to building a healthy and sustainable business culture.



JULY 18, 2025 (MORNING)



## Expo Hall

(TBD)

### Closing & Bridge to the next EXPO in Riyadh

As this GISHW journey has begun in Osaka, we eagerly forge a bridge to the next global gathering centered on Safety, Health and Well-being at EXPO 2030 in the vibrant city of Riyadh.



# INTERNATIONAL SYMPOSIUM

On Safety, Health and Wellbeing-for All

JULY 17-19, 2025

## Expo Site

## Intex Osaka

(TBD)



Policy sessions - International Strategies and Programmes for Safety, Health and Well-being

Leading international organizations present their latest strategies and policies related to Safety, Health and Well-being



### Practice sessions on Safety, Health and Well-being for All

Global businesses share practical insights into their corporate-level management strategies related to Safety, Health and Well-being

Socially sustainable Businesses: Innovation in Safety, Health and Well-being at Enterprise Level

Work & Life Balance: Balancing work and family life

Technology Innovation: AI, robots, AMR (Autonomous Mobile Robots), AGV (Automated Guided Vehicles), collaborative safety, wearable devices, extreme heat countermeasures, smart PPE (Personal Protective Equipment), wireless sensor networks, drones, remote work for people with disabilities, avatars, powered suits for caregiving and rehabilitation

Holistic Approach: Vision Zero, Zero Accident Campaign

International Consensus: International standards, certifications, talent development, and creation of common guidelines for a well-being society

Management: Investment in safety, health, and well-being, ESG (Environmental, Social, Governance), leadership, and attracting and retaining talent



GISHW @EXPO2025  
Holistic Approach  
High-level Summit  
Int'l Symposium  
World Assembly  
ILO Youth Congress  
Exhibition  
Festival  
SHW Days Overview

# World Assembly For Safety, Health and Wellbeing Professionals

## Intex Osaka

(TBD)

**JULY 16, 2025  
(MORNING & AFTERNOON)**



### Parallel morning workshops

- WORKSHOP THEME 1**  
The Future of OSH within the Sustainability Agenda
- WORKSHOP THEME 2**  
The Future of Work and Workplaces: Harnessing Digitalization for Safety, Health and Well-being
- WORKSHOP THEME 3**  
Climate Change and the Future of Work
- WORKSHOP THEME 4**  
OSH Competencies, Training and Skills for the Future World of Work



### Parallel afternoon workshops

- WORKSHOP THEME 5**  
The Evolution of Human-Centric Workplaces: How to advance workplace wellbeing
- WORKSHOP THEME 6**  
Leading with OSH Metrics – the way forward to better prevention
- WORKSHOP THEME 7**  
How is the OSH profession transforming?
- WORKSHOP THEME 8**  
The Future of OSH Partnerships and Relationships with other professionals



**JULY 18, 2025 (MORNING)**

## Expo Hall

### Plenary of the World Assembly of Safety, Health and Well-being Professionals

Theme: The Role of Safety, Health, and Wellbeing in Designing Future Society for Our Lives.

#### OPENING WITH KEYNOTES

Introducing the theme, the event participants, and purpose of the event to the audience. Followed by panel discussions with workshop rapporteurs, leaders of international organizations and industry (speakers of the International Symposium). Compilation and dissemination of messages to the next generation and the world to improve safety, health, and wellbeing. (Programme details tbd) with senior representatives from international organizations, the EXPO-management and the Government of Japan. (tbc)



# ILO YOUTH CONGRESS



## Expo Hall

**JULY 17, 2025**



## Designing Safety, Health and Well-being at Work in the Digital Age



Images:  
From SafeYouth@Work Congress  
- XXI World Congress on Safety  
and Health at Work (Singapore)



# EXHIBITION

JULY 16-19, 2025



## INTEX

(TBD)

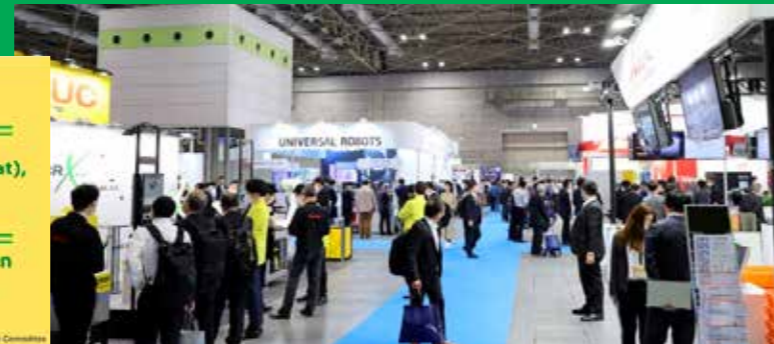
The Future Monodzukuri International EXPO Executive Committee, with the cooperation of the Japan Association for the 2025 World Exposition and other related organizations, will hold the "Future Manufacturing International EXPO" at Intex Osaka every year starting from 2023. This event is an international trade fair aligned with the Osaka-Kansai Expo, aimed at showcasing Japan's industry both domestically and internationally. It will highlight outstanding products and technologies that support various industries. Additionally, during the same period, the Japan edition of the world's largest labor safety exhibition "A+A," held biennially in Düsseldorf, Germany, will make its debut as Japan International Trade Fair for Occupational Safety & Health + Well-being (JIOSH+W).



Supporting Organization Japan Association for the 2025 World Exposition

### Future Monodzukuri International EXPO 2025

Date: July 16 (Wed)-19 (Sat), 2025  
Venue: INTEX OSAKA, Japan



### JIOSH+W

Messe Düsseldorf

#### Japan International Trade Fair for Occupational Safety & Health + Well-being

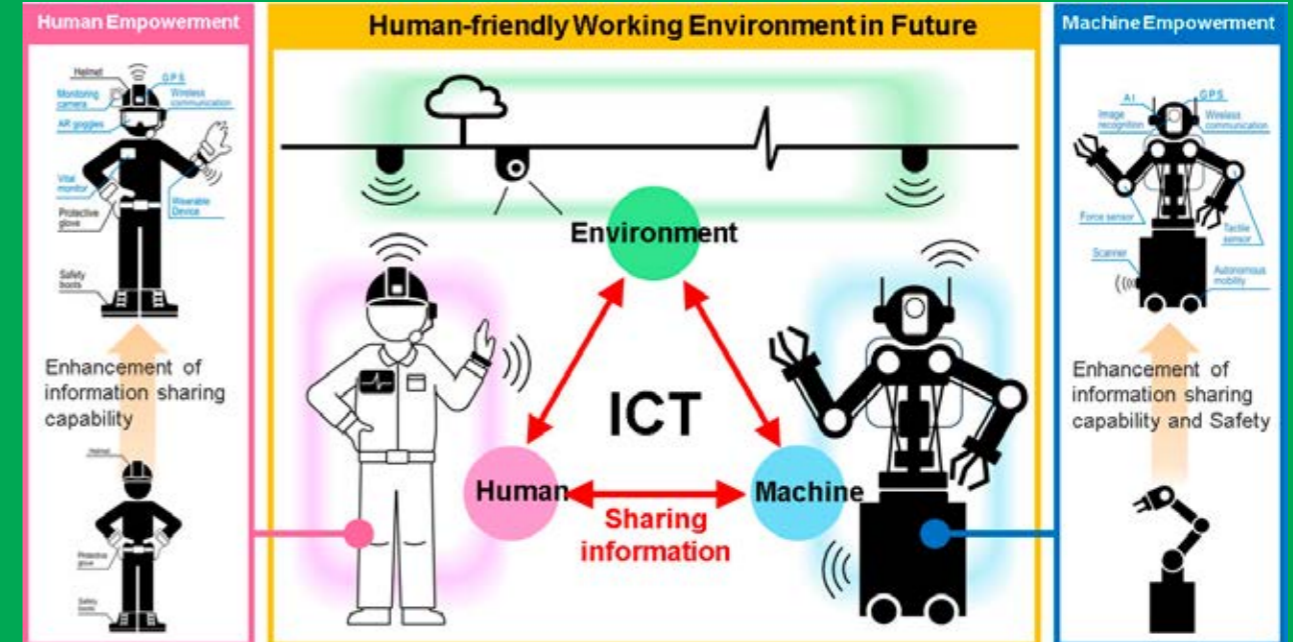
Basi

The Evolution of Safety Measures in Industrial Workplaces



A new approach called "Collaborative Safety," which aims to enhance both safety and productivity by integrating humans, machines, and the environment through ICT technology, is gaining significant attention. This concept was first introduced to the world by Japan in 2017 through IEC ACOS and has since been the subject of active discussions. In 2025, the year of the Osaka Expo, the international standard on collaborative safety, IEC Guide 127, is expected to be published. This guide, led by Japan, will be issued as an international standard to ensure safety, health, and well-being in future working environments. The possibility of holding an international symposium session on the topic is being considered.

## Technologies empower humans, machines, and the working environment



Various elemental technologies realize human-friendly working environment



Various working environments where humans, machines, and the environment are connected through ICT



# SHW FESTIVAL

JULY 17-18, 2025



## Expo Hall

(TBD)

Immerse yourself in the exhilarating SHW festival, where you can revel in cutting-edge technologies and pioneering trends that propel safety, health, and wellbeing to new heights.



Rehabilitation with exoskeleton suit



Remote work for handicapped workers



# SHW WEEK OVERVIEW

(TBD)

## Days on Safety, Health and Well-being



### GISHW PROGRAMME OVERVIEW 16 – 19 JULY 2025

	16 JULY 2025	17 JULY 2025	18 JULY 2025	19 JULY 2025
<b>AM</b>	<b>WORLD ASSEMBLY</b>	<b>SUMMIT</b>	<b>SUMMIT</b>	<b>SYMPOSIUM</b>
10:00-12:00 10:00-12:30	WORLD ASSEMBLY WORKING GROUP 1-4 VENUE: INTEX	SUMMIT OPENING INTERNATIONAL & BUSINESS LEADER ROUNDTABLES VENUE: EXPO HALL	OSH-LEADER ROUNDTABLE WORLD ASSEMBLY PLENARY SUMMIT CLOSING & BRIDGE VENUE: EXPO HALL	SYMPOSIUM POLICY TRACKS VENUES: INTEXT & EXPO SALON SYMPOSIUM PRACTICE TRACKS VENUE: INTEX
<b>PM</b>	<b>WORLD ASSEMBLY</b>	<b>ILO YOUTH FORUM &amp; FESTIVAL SYMPOSIUM</b>	<b>FESTIVAL &amp; SYMPOSIUM</b>	<b>SYMPOSIUM</b>
14:00-17:00 14:00-19:00	WORLD ASSEMBLY WORKING GROUP 1-4 VENUE: INTEX	ILO YOUTH CONGRESS & FESTIVAL VENUE: EXPO HALL SYMPOSIUM POLICY TRACKS VENUES: INTEXT & EXPO SALON SYMPOSIUM PRACTICE TRACKS VENUE: INTEX	FESTIVAL VENUE: EXPO HALL SYMPOSIUM POLICY TRACKS VENUES: INTEXT & EXPO SALON SYMPOSIUM PRACTICE TRACKS VENUE: INTEX	SYMPOSIUM POLICY TRACKS VENUES: INTEXT & EXPO SALON SYMPOSIUM PRACTICE TRACKS VENUE: INTEX
19:00-21:00	WELCOME RECEPTION			
10:00-17:00	THEME PARK VENUE: EXPO HALL EXHIBITION – VENUE: INTEX	THEME PARK VENUE: EXPO HALL EXHIBITION – VENUE: INTEX	THEME PARK VENUE: EXPO HALL EXHIBITION – VENUE: INTEX	THEME PARK VENUE: EXPO HALL EXHIBITION – VENUE: INTEX



GISHW @EXPO2025

Holistic Approach

High-level Summit

Int'l Symposium

World Assembly

ILO Youth Congress

Exhibition

Festival

SHW Days Overview

# Be a part of the Global Initiative for Safety, Health and Well-being @EXPO2025 and BEYOND (GISHW)



## Become our program sponsor: Ignite Wonder!



Basic Plans					
Sponsorship/Fees		Platinum	Gold	Silver	Bronze
		JPY12,000,000	JPY5,000,000	JPY2,500,000	JPY1,000,000
Expo Hall	Speech on stage	✓			
	Video projection on stage screen	✓	✓		
	Company logo on title/sponsor boards	✓	✓	✓	✓
	Logo on brochures/programs, etc.	✓	✓	✓	✓
Intex Osaka	Video projection on stage screen (up to 30 seconds)	✓	✓		
	Company logo on sponsor boards	✓	✓	✓	✓
	Logo on brochures/programs, etc.	✓	✓	✓	✓
Future Monodzukuri EXPO	On-site exhibition (1 booth: 2970W×2970D×2700H mm)	4 booths	2 booths	1 booth	
	Online exhibition	✓	✓	✓	
	Logo in the theme corner	✓	✓	✓	
	Logo in the special feature of the Nikkan Kogyo Shimbun (daily newspaper) with distribution at the venue	✓	✓		
GISHW Website	Logo with URL link	✓	✓	✓	✓
Welcome reception		4 persons	2 persons	2 persons	2 persons
EXPO admission ticket (E-ticket)		16 tickets	8 tickets	8 tickets	8 tickets

## Be a participant: Join the journey!

### Registration Fees

Regular	Early birds (20% OFF)	Group of over 50 persons (per person) (20% OFF)	Low- and lower middle income countries (40% OFF)	Students
JPY150,000	JPY120,000	JPY120,000	JPY90,000	JPY60,000

### Registration includes:

#### Entry tickets to EXPO2025



#### Access to all GISHW events in EXPO2025 and Intex Osaka

- HIGH-LEVEL SUMMIT
- INT'L SYMPOSIUM
- WORLD ASSEMBLY
- ILO YOUTH CONGRESS
- EXHIBITION
- FESTIVAL

#### Access to all EXPO2025 events!



### Eight Signature Pavilions



Dialogue Theater – sign of life –

8 KAWASE Naomi Producer

1 MIYATA Hiroaki Producer

Better Co-being

EARTH MART

7 KOYAMA Kundo Producer

2 ISHIGURO Hiroshi Producer

Future of Life

LIVE EARTH JOURNEY

6 KAWAMORI Shoji Producer

3 NAKAJIMA Sachiko Producer

Playground of Life: Jellyfish Pavillion

Dynamic Equilibrium of Life

5 FUKUOKA Shin-ichi Producer

4 OCHIAI Yoichi Producer

null2

GISHW @EXPO2025

Be a Sponsor

Be a Participant

Supporters & Collaborators

Contacts

# Supporters & Collaborators



The logos displayed represent institutions and companies that are jointly promoting the improvement of workers' safety, health, and well-being.



# Contacts



HIGH-LEVEL SUMMIT INT'L SYMPOSIUM

Hans-Horst Konkolewsky (FIORP) (Konkolewsky@me.com)

WORLD ASSEMBLY

Marijana Zivkovic Mtegha (IOSH) (Marijana.ZivkovicMtegha@iosh.com)

ILO YOUTH CONGRESS

Keiko Noda (ILO) (noda@ilo.org)  
Yuka Ujita (ILO) (ujita@ilo.org)

EXHIBITION/THEME PARK

Lars Wismer (Messe Düsseldorf GmbH) (WismerL@messe-duesseldorf.de)  
Masahiro Hashiki (Messe Düsseldorf Japan) (hashiki@messe-dus.co.jp)  
Yuri Sakamoto (Nikkan Kogyo Shimbun) (fmiexpo@nikkan.tech)

FESTIVAL

Koji Sagawa (sagawak@j-cert.com)

**Secretariat**

Takehiro Uehara (ueharat@j-cert.com)  
Hideki Yamada (hideki.yamada@idec.com)

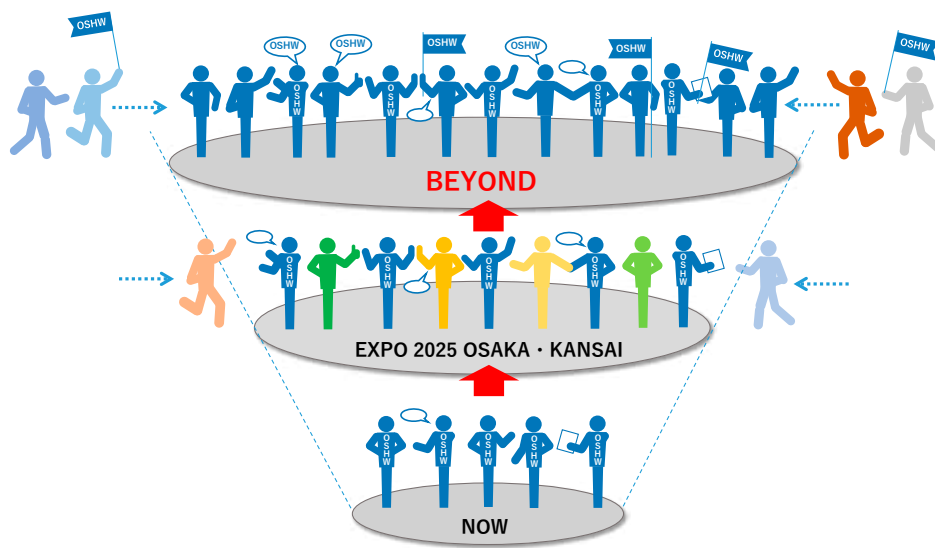


# Join the Global Initiative for Safety, Health & Well-being at Work that begins with the Osaka-Kansai Expo 2025 (EXPO2025)!

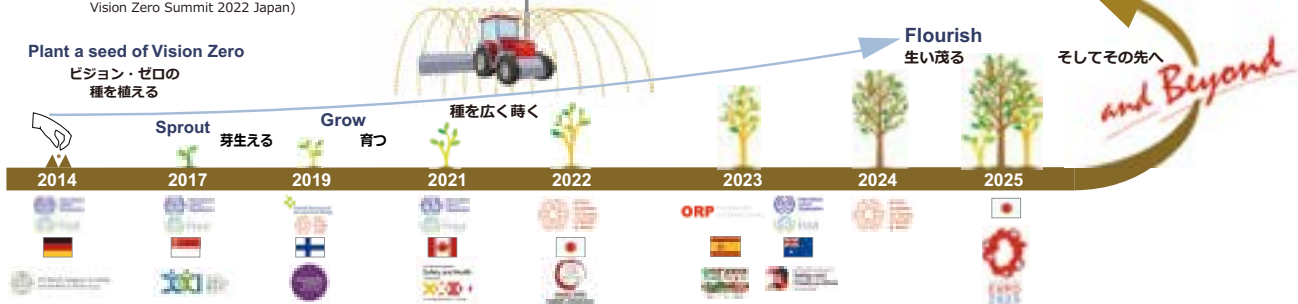
The Global Initiative for Safety, Health, and Well-being @ EXPO2025 & BEYOND (GISHW) aims to improve the safety, health, and well-being of the world's 8 billion people through enhancing the working environments of workers globally, starting with EXPO2025. Achieving this goal requires the collaboration of international organizations, businesses, academic institutions, civic networks, and more, working together to advance well-being.

We invite you to participate in this effort to create safe and healthy working environments for everyone. Engaging with like-minded individuals will also provide opportunities to develop your own skills and grow your business.

Let's design and co-create a better future society together!



Safety, Health, and Well-being for ALL



Visit us at [GISHW.com](https://GISHW.com)

